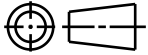
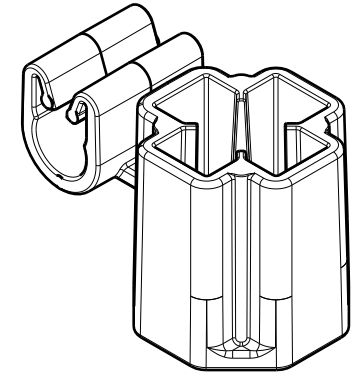
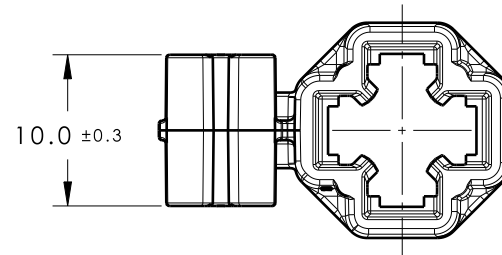


CATIA V5



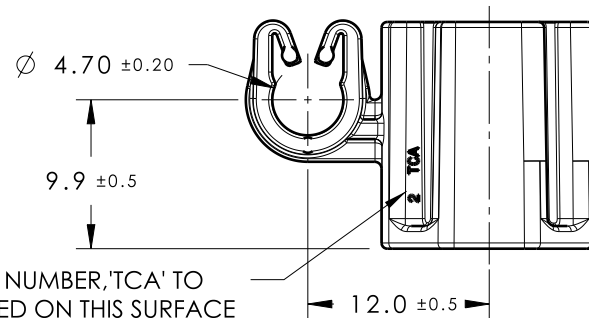
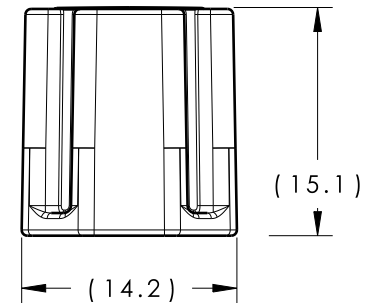
Revision Level			Revision Record	Changed	Date	Approved	Date
Drawing	State	Part					
02.1	Design Release		SEE ECN# 013980	TAT	08/02/17	KVH	08/02/17



ISOMETRIC VIEW

REFERENCE:

1. STUD MOUNT PUSH ON FORCE: 45 NEWTONS (10 LBS)
MAX ON EACH APPLICABLE STUD SIZE
2. STUD MOUNT PULL OFF FORCE: 110 NEWTONS (25 LBS)
MIN ON EACH APPLICABLE STUD SIZE
3. APPLICABLE STUD SIZE:
A. M6
4. CLIP PUSH ON FORCE: 45 NEWTONS (10 LBS) MAX
USING NOMINAL PIN SIZE OF 4.7MM

CAVITY ID NUMBER, 'TCA' TO
BE LOCATED ON THIS SURFACE

NOTES:

1. MAXIMUM PERCENT REGRIND PERMISSIBLE: 25%
2. MAX ALLOWABLE FLASH OR MISMATCH TO BE 1MM

Material PA66HIRHS COLOR: BLACK	Units millimeters	The copyright of this drawing is reserved by HellermannTyton. It is issued on condition that it is not reproduced, copied or disclosed to a third party, either wholly or in part, without the consent of HellermannTyton.	Drawn	TAT	02/06/17	Article/Type-No	PC5SM6	Scale	2:1
			Approved	KVH	02/06/17	Title	M6 STUD MOUNT WITH 4.7MM CLIP	Project Number	17-0125
			HellermannTyton North America Email: corp@htamericas.com Web: www.hellermann.tyton.com			Drawing-No	PRODUCTION : Phase	Format	AH
						17-0125-001-CSU		Sheet	1/1

Tolerance defined on
each dimension